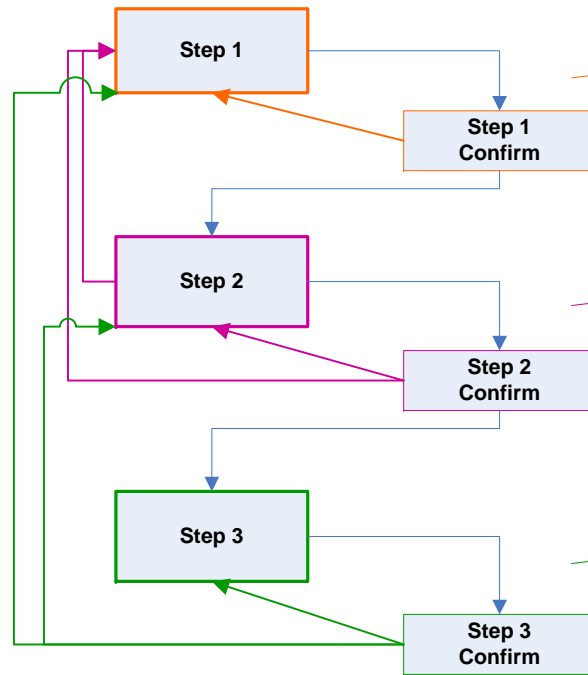


## Navigational Flow Between Steps



## Breadcrumb Functionality

### Step 1 & Step 1 Confirm:

Higher level steps are **disabled** using the 'off' version of the icons. This steps' icon uses the "on" version but is not clickable.

### Step 2 & Step 2 Confirm:

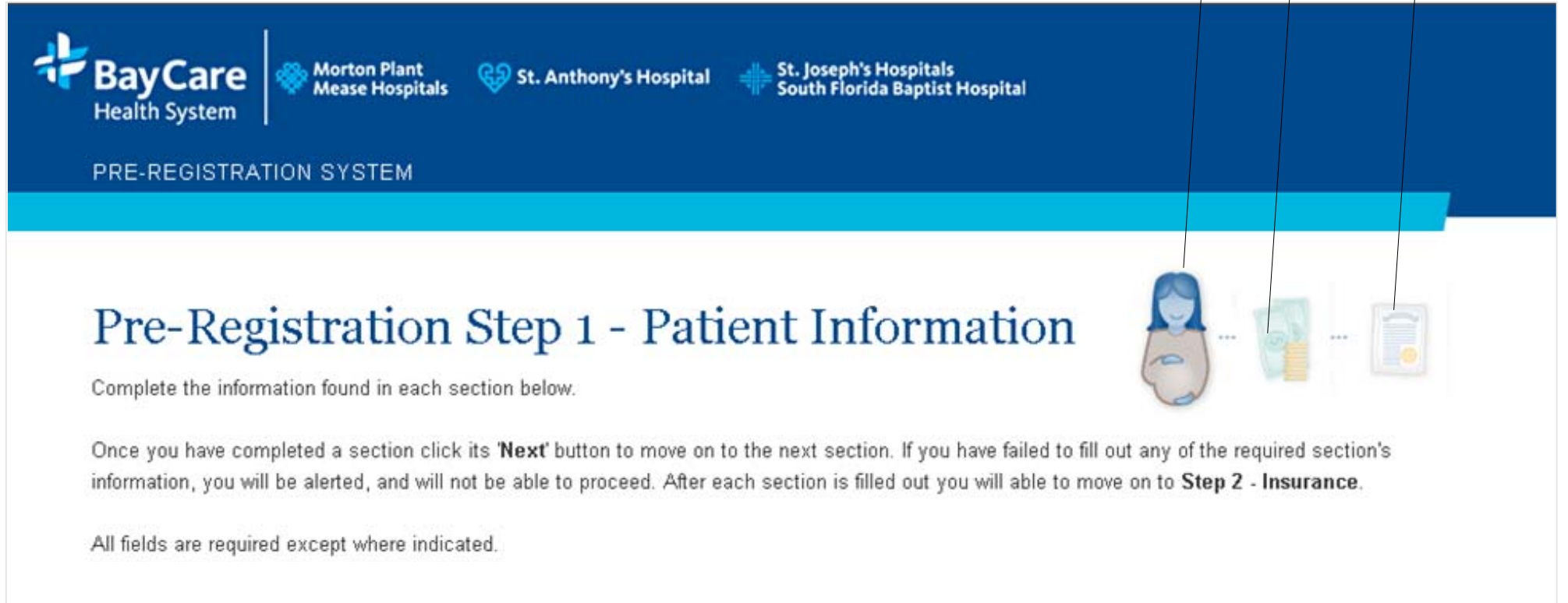
Higher level steps are **disabled** using the 'off' version of the icons. This steps' icon uses the "on" version but is **not clickable**. Step 1's icon is 'off' but is **clickable**, with the **hover state** switching image to 'on'

### Step 3 & Step 3 Confirm:

This steps' icon uses the "on" version but is **not clickable**. Step 1 and 2's icon is 'off' but is **clickable**, with the **hover state** switching image to 'on'

Flowing down in order.  
Flowing up only to previously completed sections

## Step 1 & Step 1 Confirm



The screenshot shows the top navigation bar with the BayCare Health System logo and logos for Morton Plant Mease Hospitals, St. Anthony's Hospital, and St. Joseph's Hospitals South Florida Baptist Hospital. Below the navigation bar is a blue banner with the text "PRE-REGISTRATION SYSTEM". The main content area is titled "Pre-Registration Step 1 - Patient Information" and includes instructions for completing the information and moving to Step 2 - Insurance. There are three callout boxes pointing to icons of a pregnant woman, a stack of money, and a document, each labeled "Off State, Disabled".

On State, Disabled

Off State, Disabled

Off State, Disabled

**BayCare**  
Health System

Morton Plant  
Mease Hospitals

St. Anthony's Hospital

St. Joseph's Hospitals  
South Florida Baptist Hospital

PRE-REGISTRATION SYSTEM

### Pre-Registration Step 1 - Patient Information

Complete the information found in each section below.

Once you have completed a section click its **'Next'** button to move on to the next section. If you have failed to fill out any of the required section's information, you will be alerted, and will not be able to proceed. After each section is filled out you will be able to move on to **Step 2 - Insurance**.

All fields are required except where indicated.

## Step 2 & Step 2 Confirm

Off State, Enabled, Hover State On

On State, Disabled

Off State, Disabled

**BayCare**  
Health System

Morton Plant  
Mease Hospitals

St. Anthony's Hospital

St. Joseph's Hospitals  
South Florida Baptist Hospital

PRE-REGISTRATION SYSTEM

# Pre-Registration Step 2: Insurance

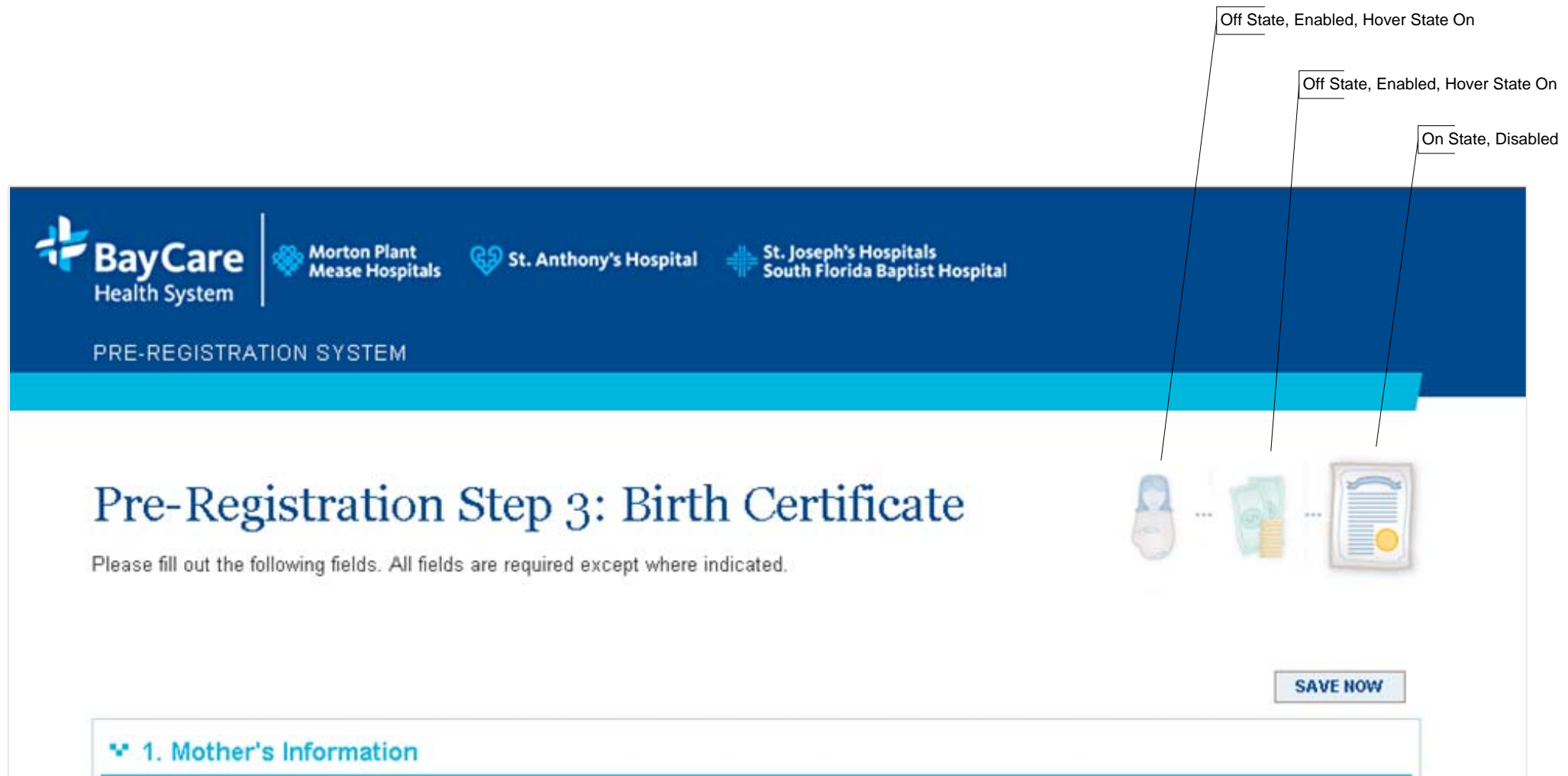
Please fill out the following fields. All fields are required except where indicated.

**Please Note:** Patients who are members of an HMO must obtain...

SAVE NOW

1. Primary Insurance Information

## Step 3 & Step 3 Confirm



BayCare Health System | Morton Plant Mease Hospitals | St. Anthony's Hospital | St. Joseph's Hospitals South Florida Baptist Hospital

PRE-REGISTRATION SYSTEM

### Pre-Registration Step 3: Birth Certificate

Please fill out the following fields. All fields are required except where indicated.

SAVE NOW

1. Mother's Information

Off State, Enabled, Hover State On

Off State, Enabled, Hover State On

On State, Disabled